



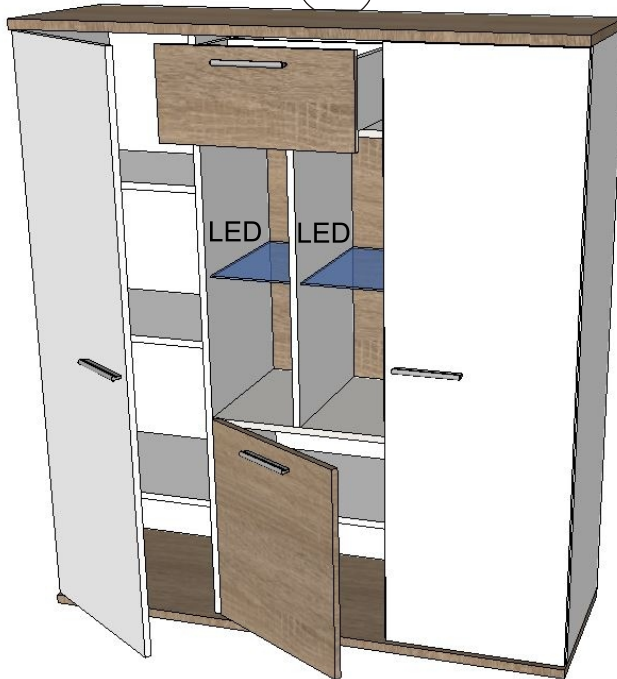
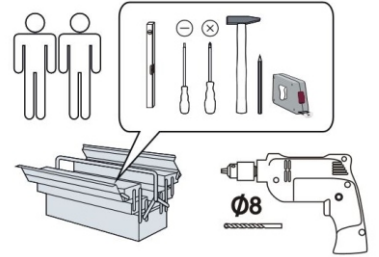
TRE HIGHBOARD

45-020-...-3

1/15



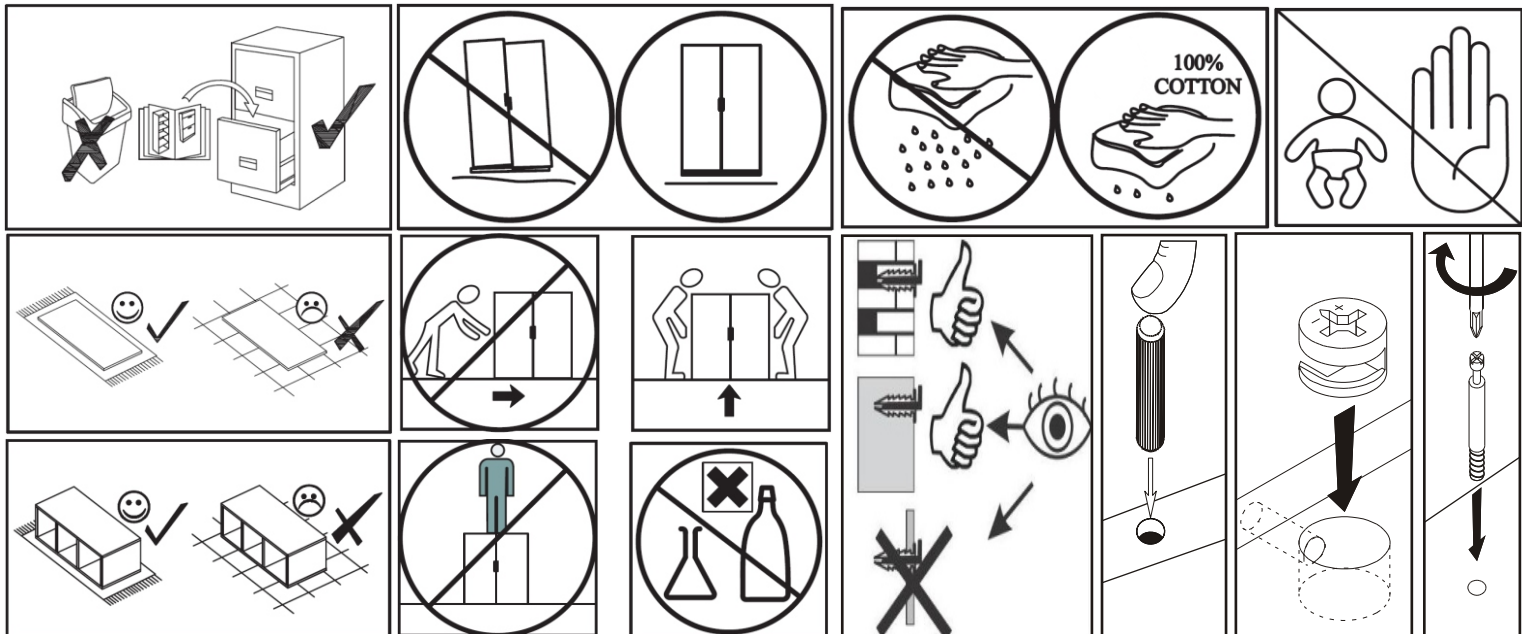
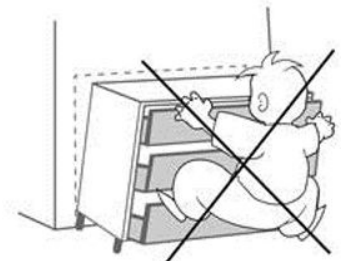
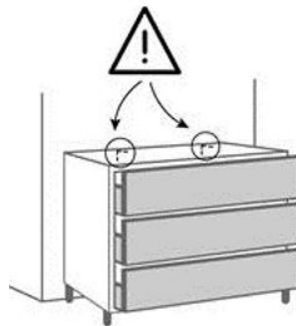
wyprodukowano dla / made for / produziert für
BEGA GRUPPE
producent: **MEBLE OKMED** POLAND



<http://www.bega-gruppe.de>

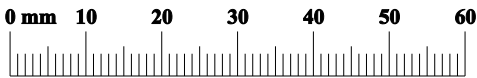
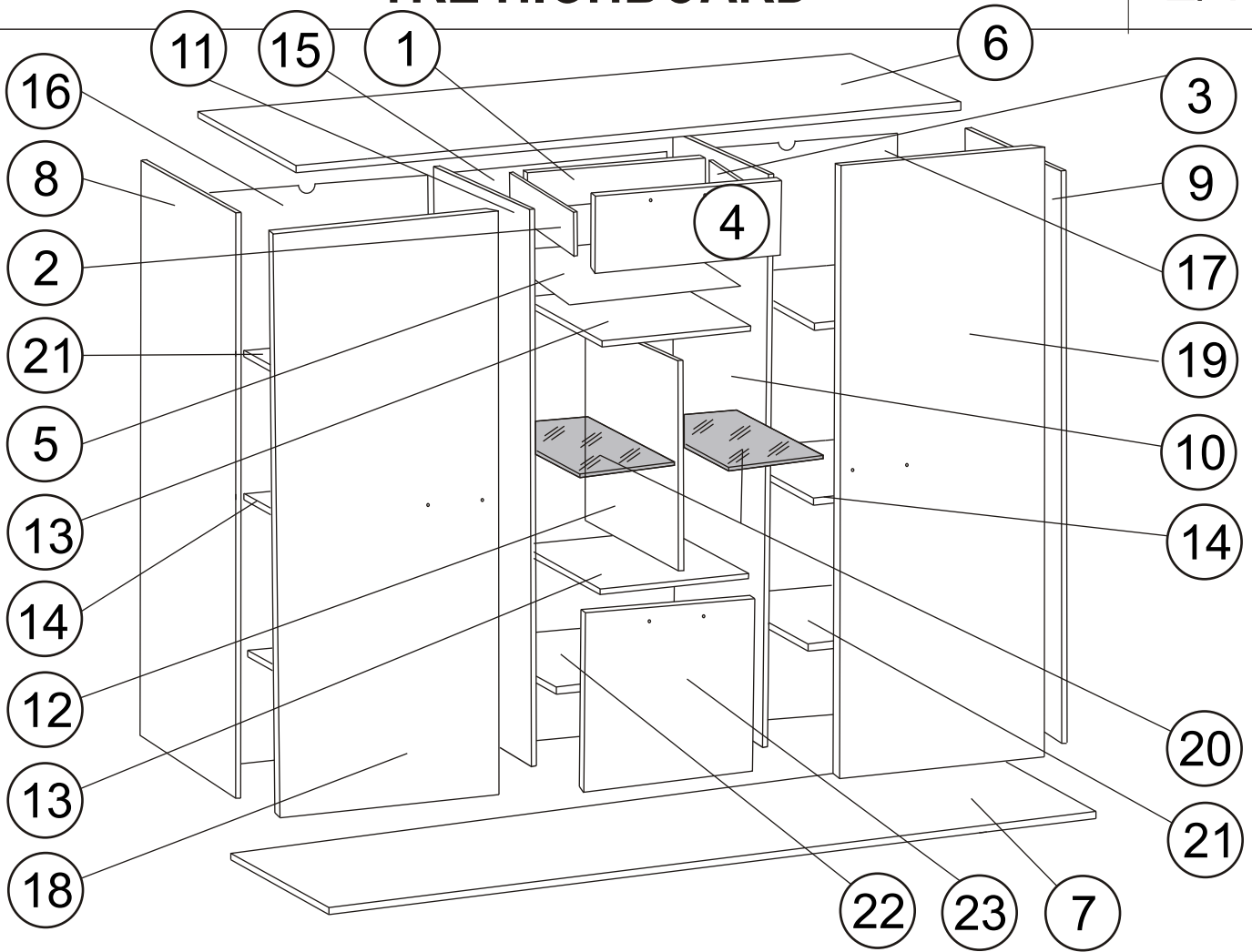


BG	Bulgarsch	Български
CS	Tschechisch	Čeština
DA	Dänisch	Dansk
DE	Deutsch	Deutsch
ET	Estonisch	Eesti
EL	Griechisch	ελληνικά
EN	Englisch	English
ES	Spanisch	español
FR	Französisch	Français
FI	Finnisch	suomalainen
HR	Kroatisch	hrvatski
HU	Ungarisch	magyar
IT	Italienisch	italiano
LV	Lettisch	latvis
LT	Litauisch	lietuvis
NL	Niederländisch	Nederlands
PL	Polnisch	Polski
PT	Portugiesisch	português
RO	Rumänisch	român
SK	Slowakisch	slovenský
SL	Slowenisch	slovensčina
SV	Schwedisch	Svenska



TRE HIGHBOARD

2/15



1/3	7	22x363x1260	x1
	6	22x363x1260	x1
	22	16x317x409	x1
	12	16x654x327	x1
	13	16x327x410	x1
	13	16x327x410	x1

2/3	2	16x110x310	x1
	3	16x110x310	x1
	8	16x345x1350	x1
	9	16x345x1350	x1
	11	16x327x1350	x1
	10	16x327x1350	x1
	1	16x97x370	x1
	14	16x327x392	2

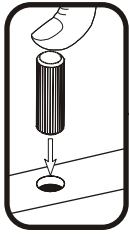
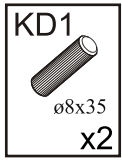
3/3	20	5x302x188	x2
	5	3x384x315	x1
	18	16x416x1344	x1
	19	16x416x1344	x1
	4	16x195x416	x1
	23	16x495x416	x1
	16,17	3x408x1366	x2
	15	3x1366x426	x1
	21	16x317x392	x4

K1 $\varnothing 7 \times 50$ x14	ZM1B x26	ZM1A x26	SS3 x6	ZM1 $\varnothing 16$ x26
KSK1 Glue x1	PQ1/PQ2 x1	U75 x4	U75A $\varnothing 3,5 \times 27$ x8	ZKL2 x2 x1
Z1 x6	Z1P x6	KD1 $\varnothing 8 \times 35$ x40	S1 x13	PP x20
KK1 x1	W1 $\varnothing 3 \times 16$ x19	W11 $\varnothing 3,5 \times 16$ x8	W4 $\varnothing 4 \times 13$ x16	W6 $\varnothing 4 \times 20$ x6
ZMP2 x2	ZMP2P x2	UP1 x8	PL1 x16	KRW1 $\varnothing 8$ x2 KS1 x2

TRE HIGHBOARD

3/15

01

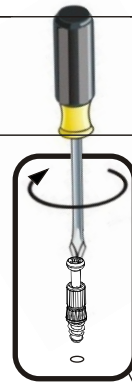


1

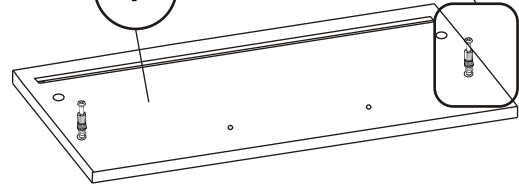
15 min



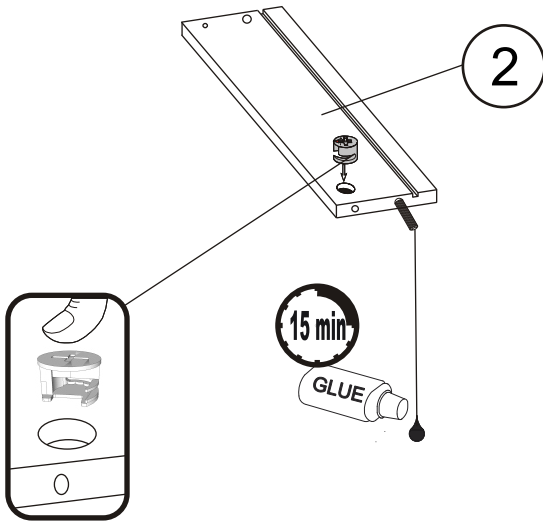
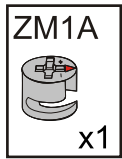
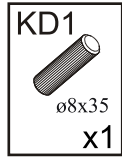
02



4



03

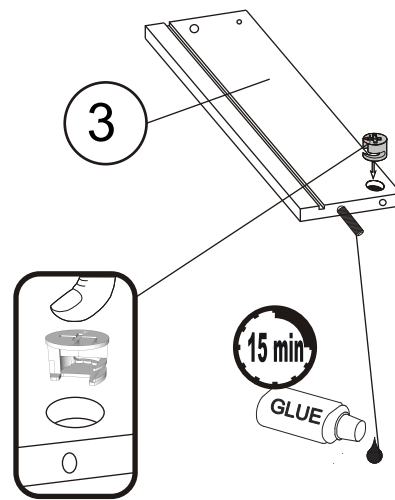
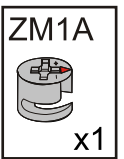
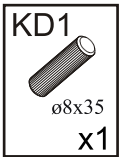


2

15 min



04

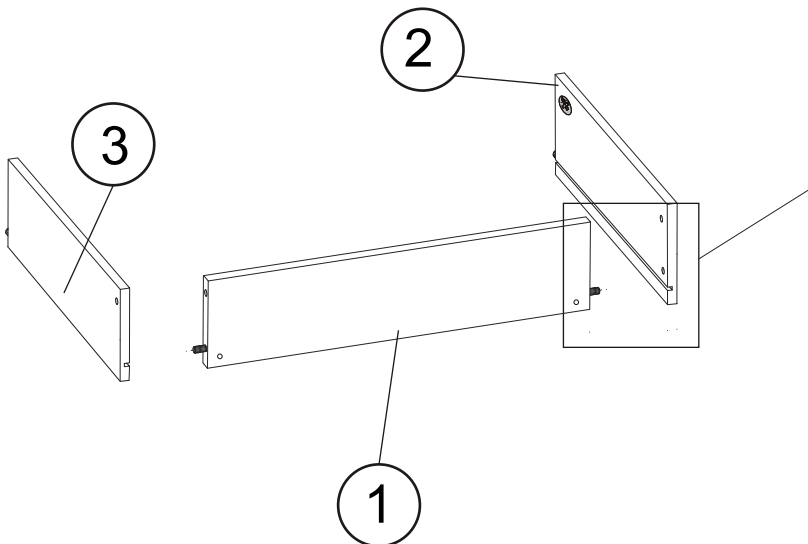
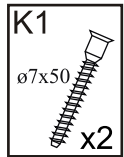


3

15 min



05

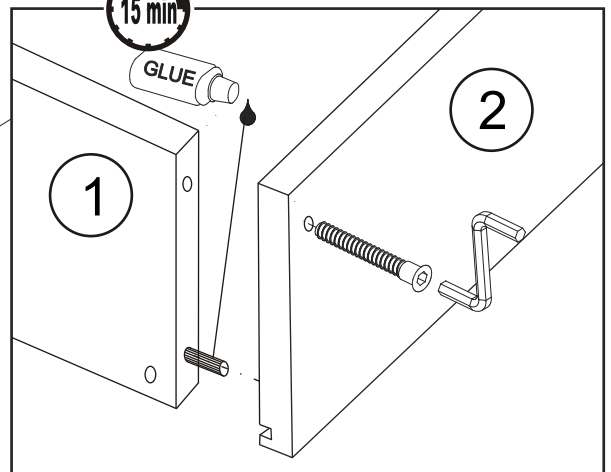


2

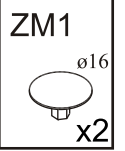
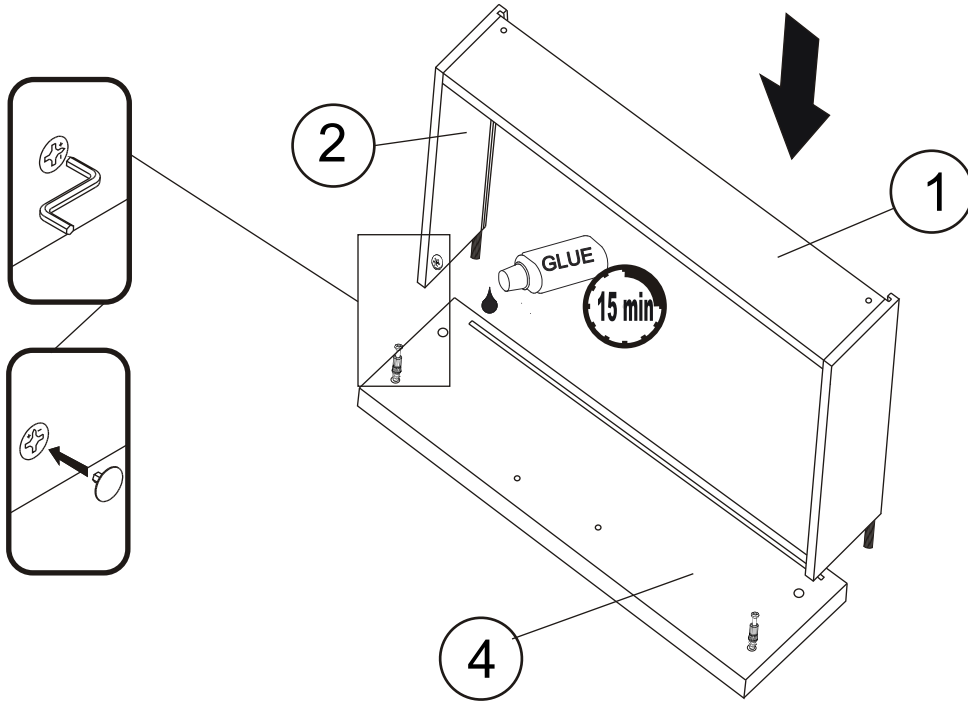
15 min



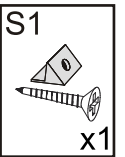
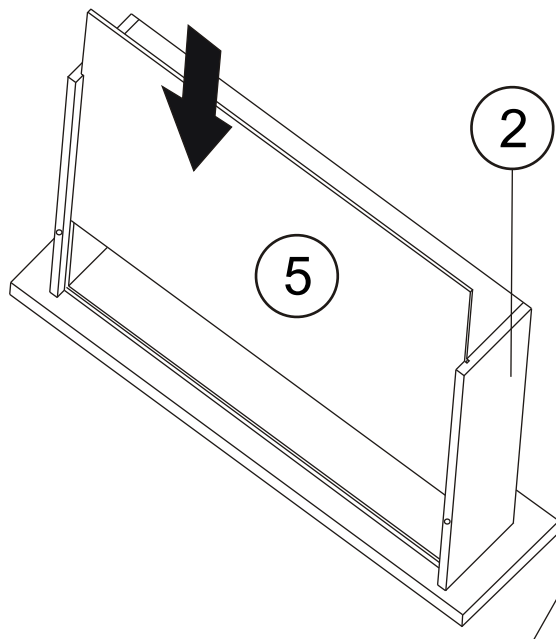
2



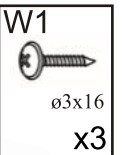
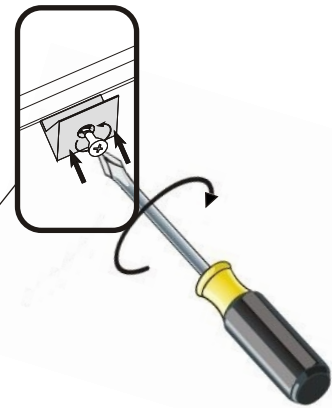
06



07



08b

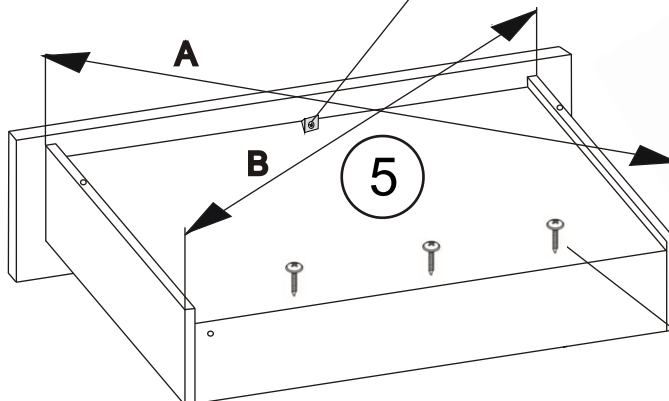


08 → 08a → 08b → 08c

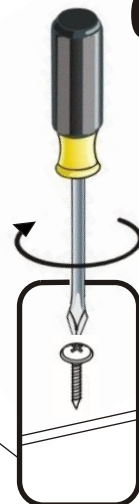
08a



A=B



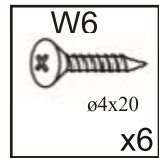
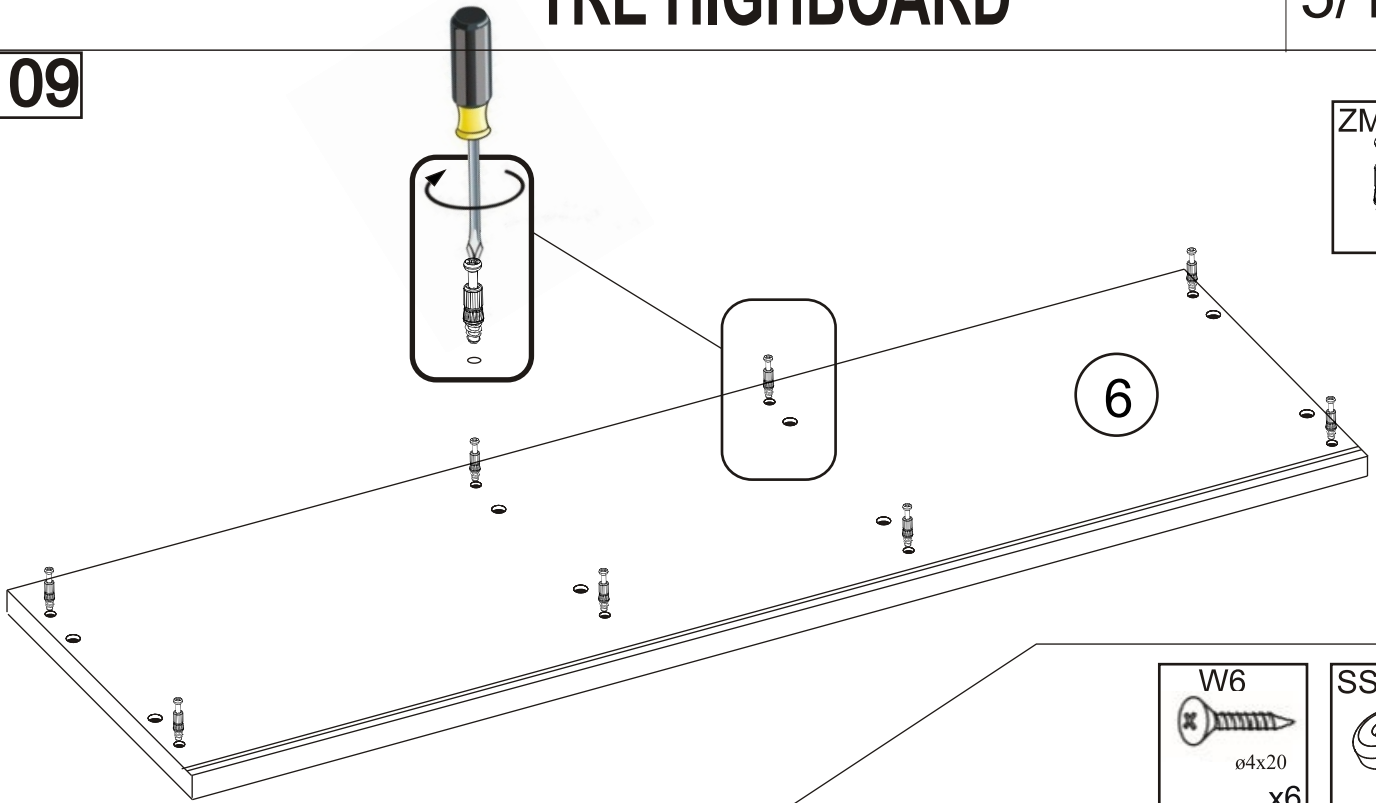
08c



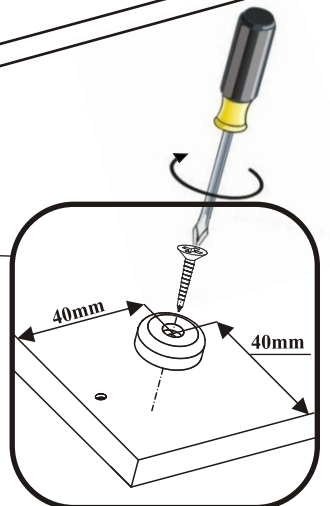
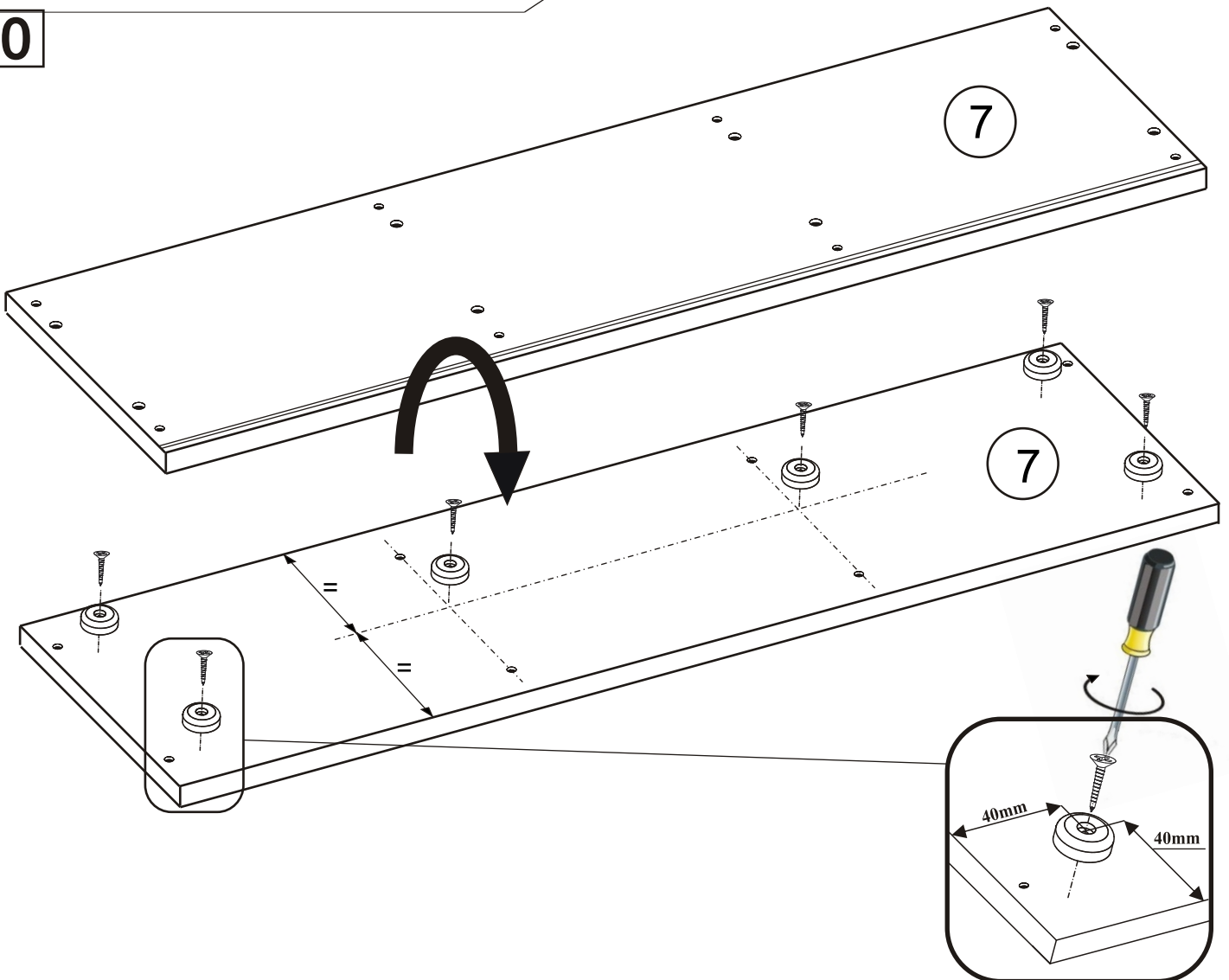
TRE HIGHBOARD

5/15

09



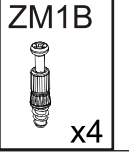
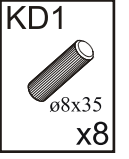
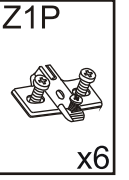
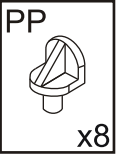
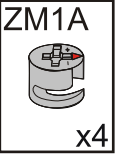
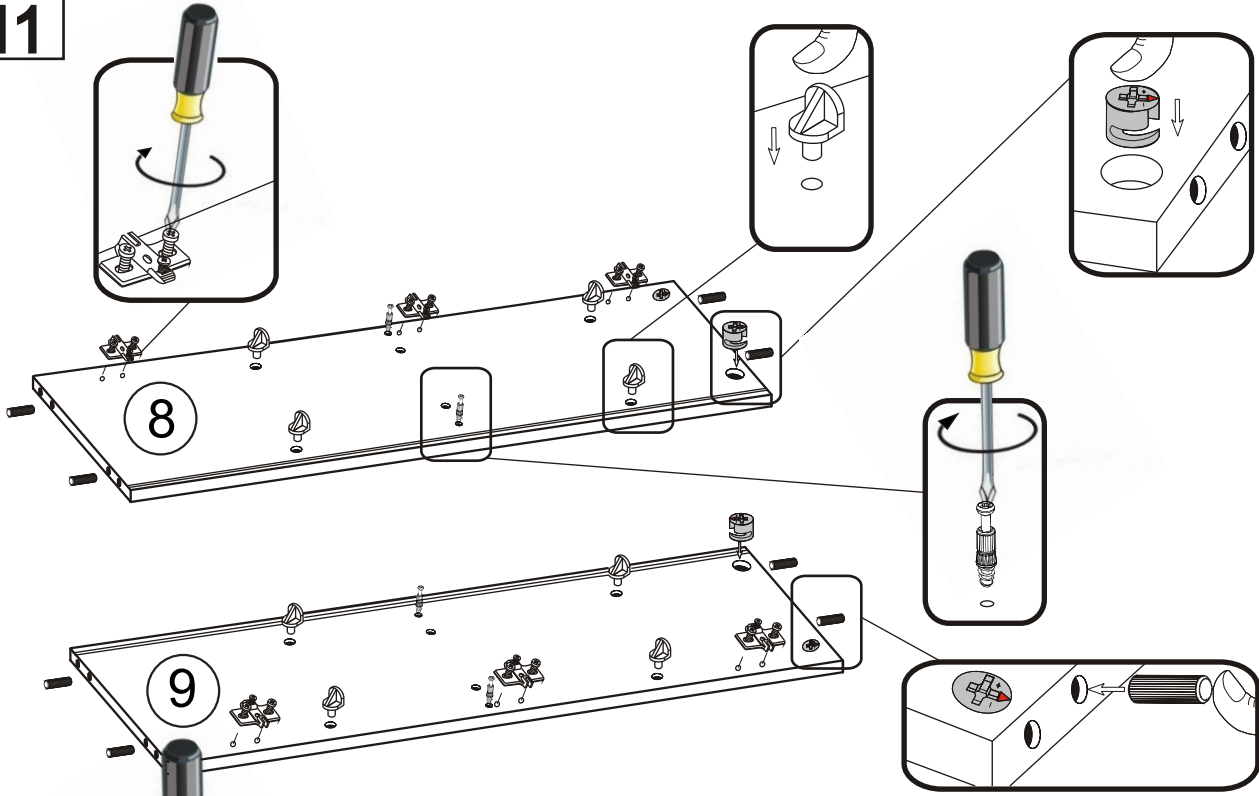
10



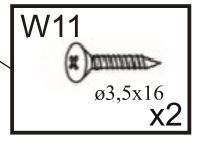
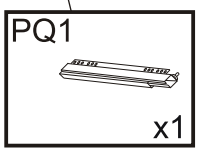
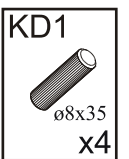
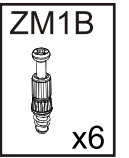
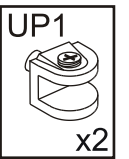
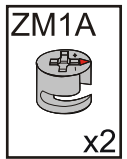
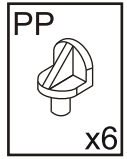
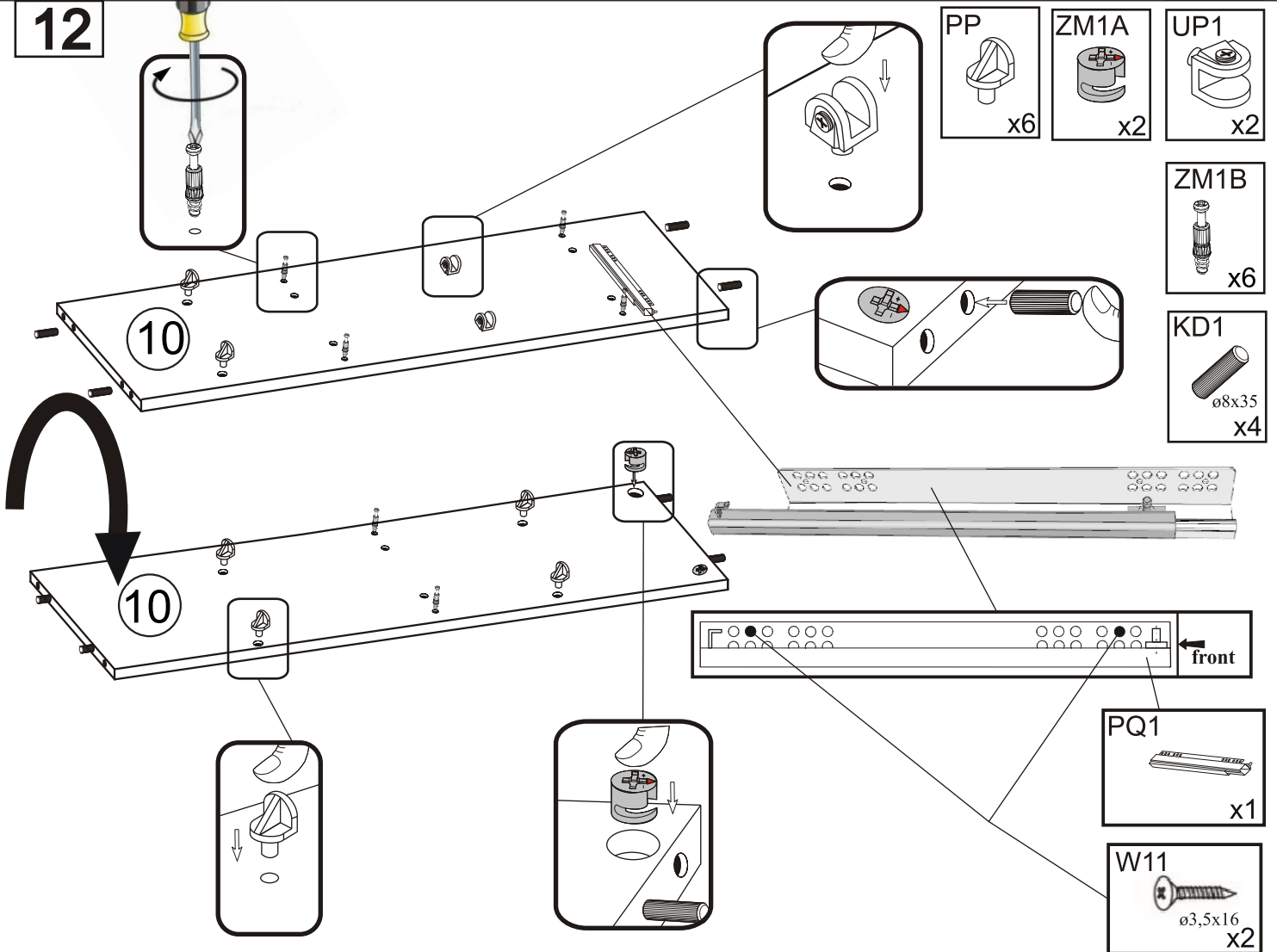
TRE HIGHBOARD

6/15

11



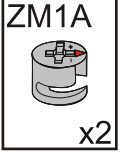
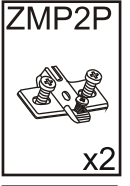
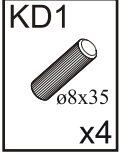
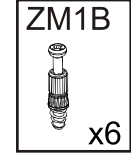
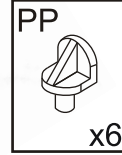
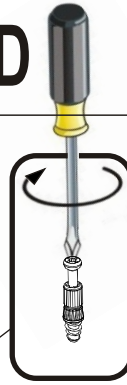
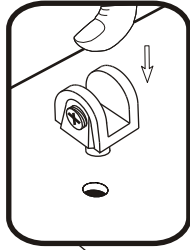
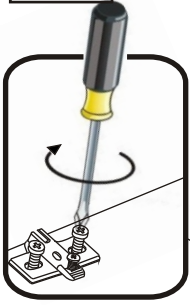
12



TRE HIGHBOARD

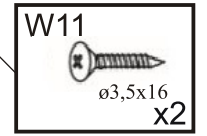
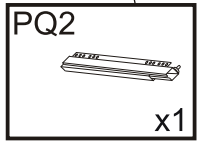
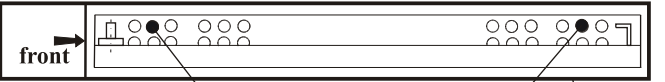
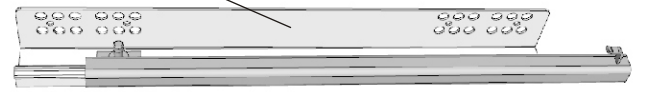
7/15

13



11

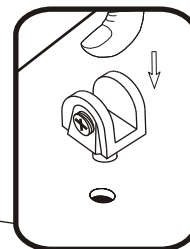
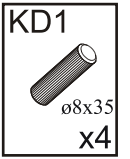
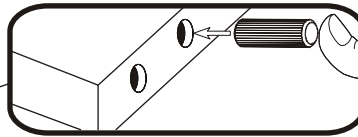
11



14

12

12

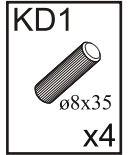
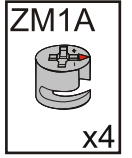
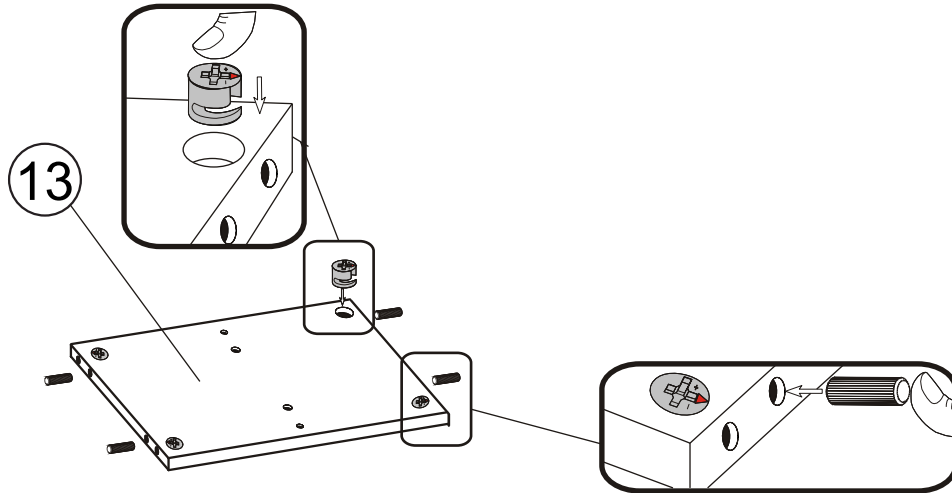


TRE HIGHBOARD

8/15

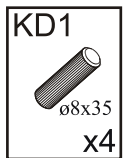
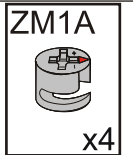
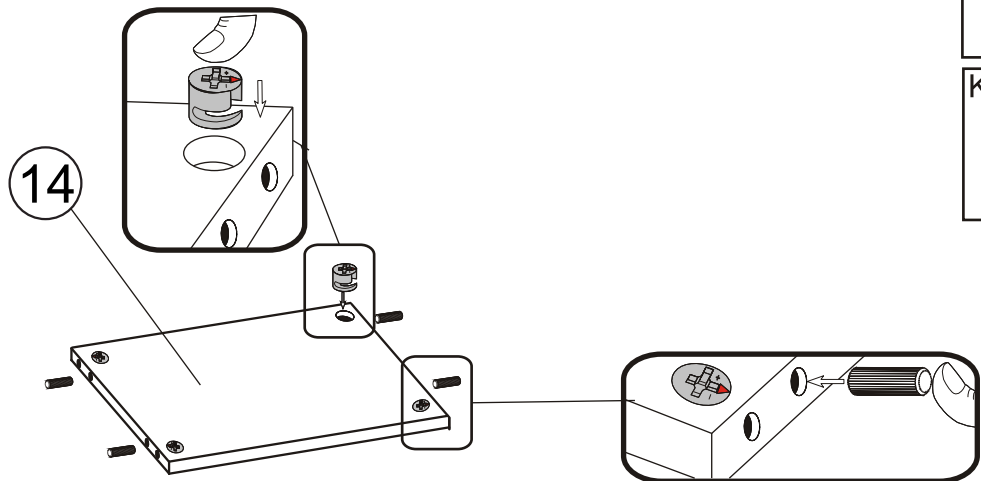
15

x2

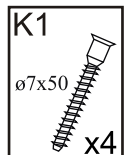
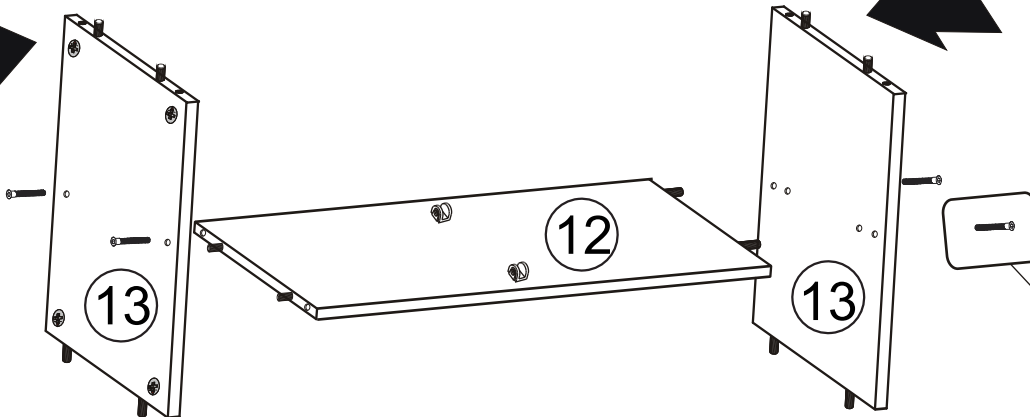


16

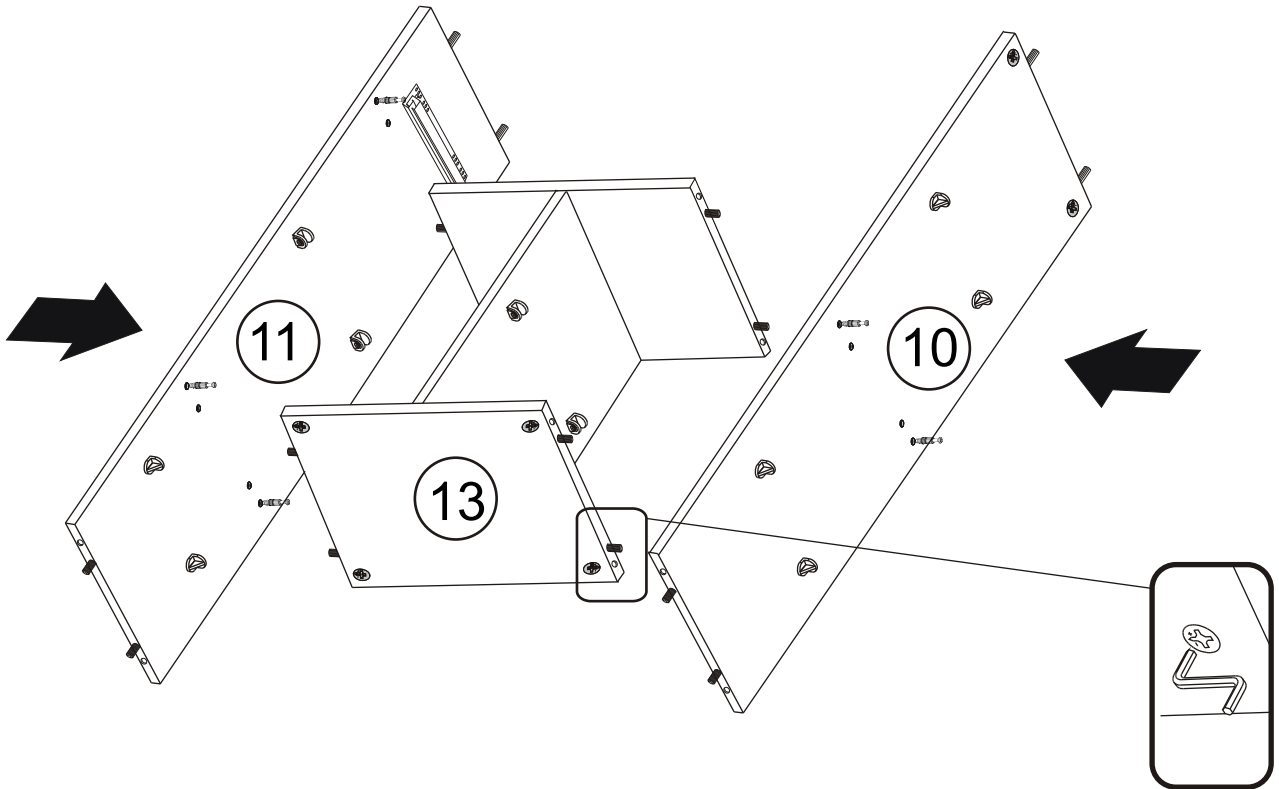
x2



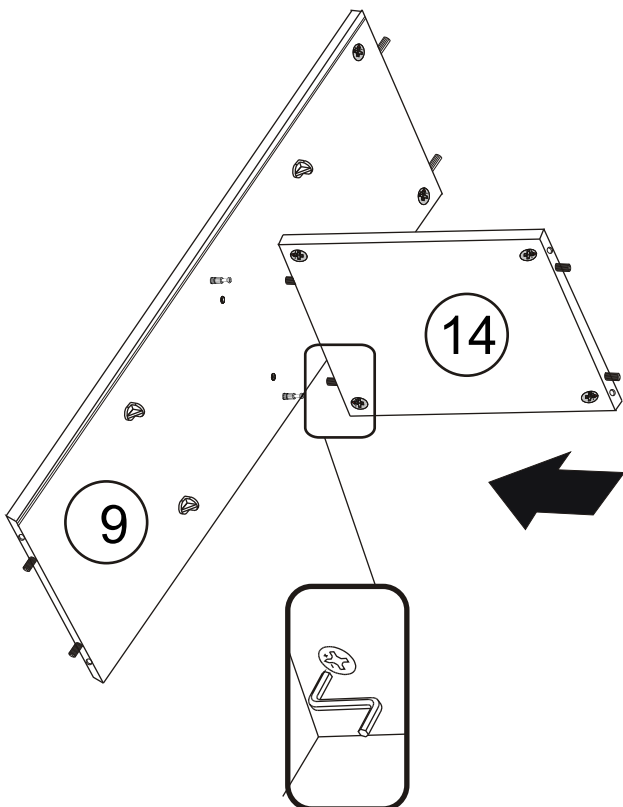
17



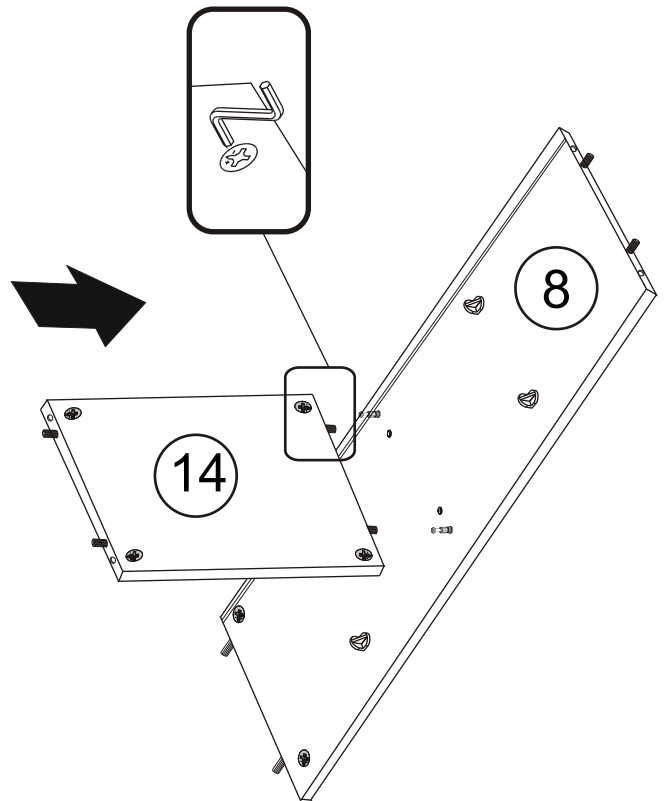
18



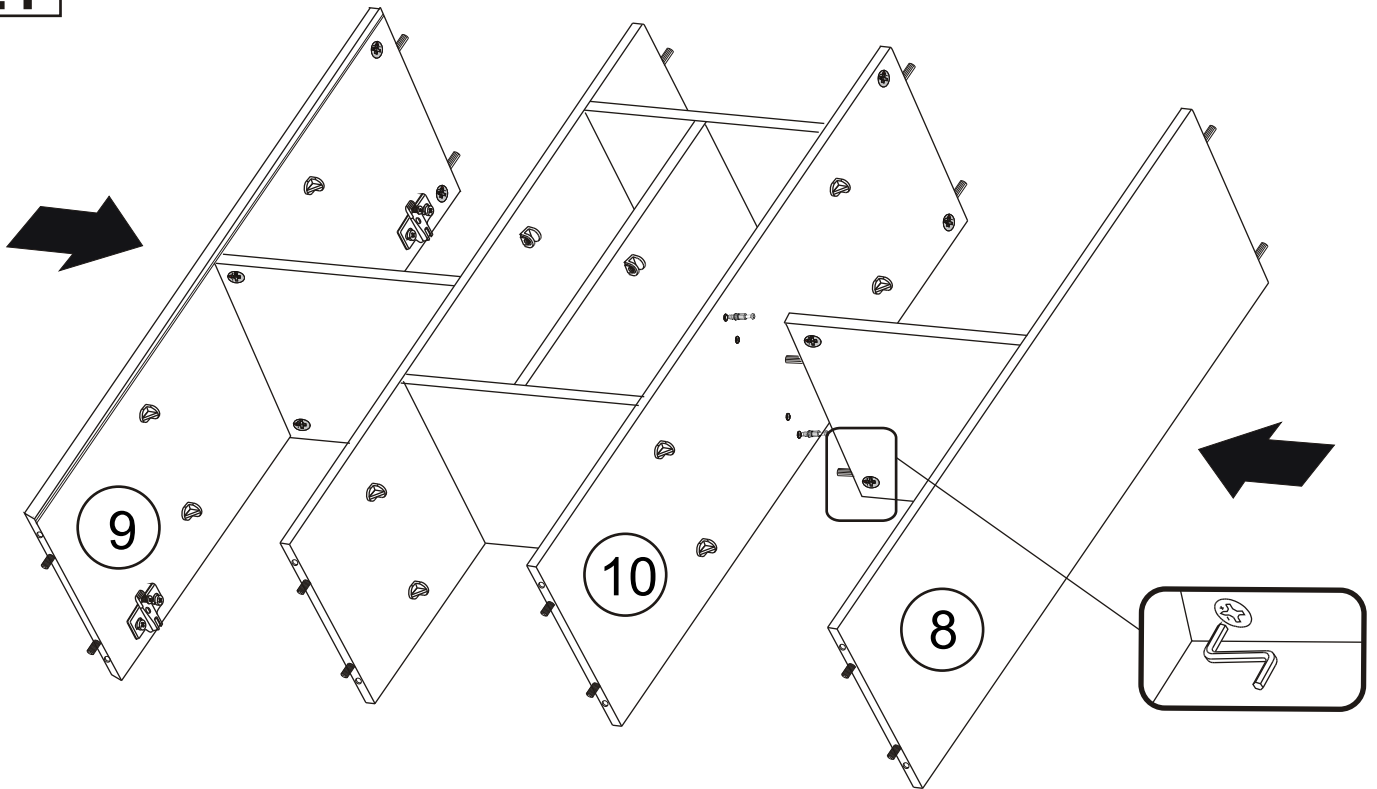
19



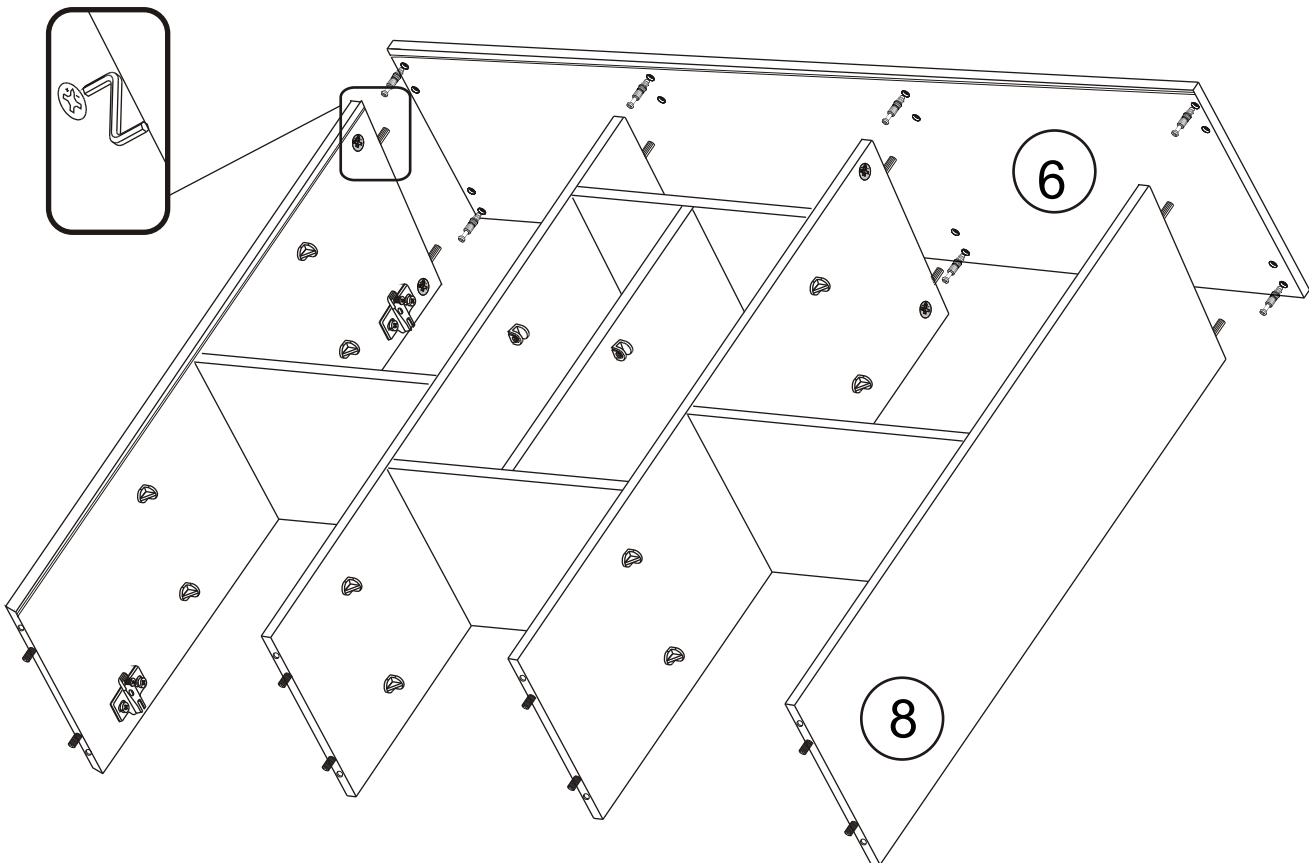
20



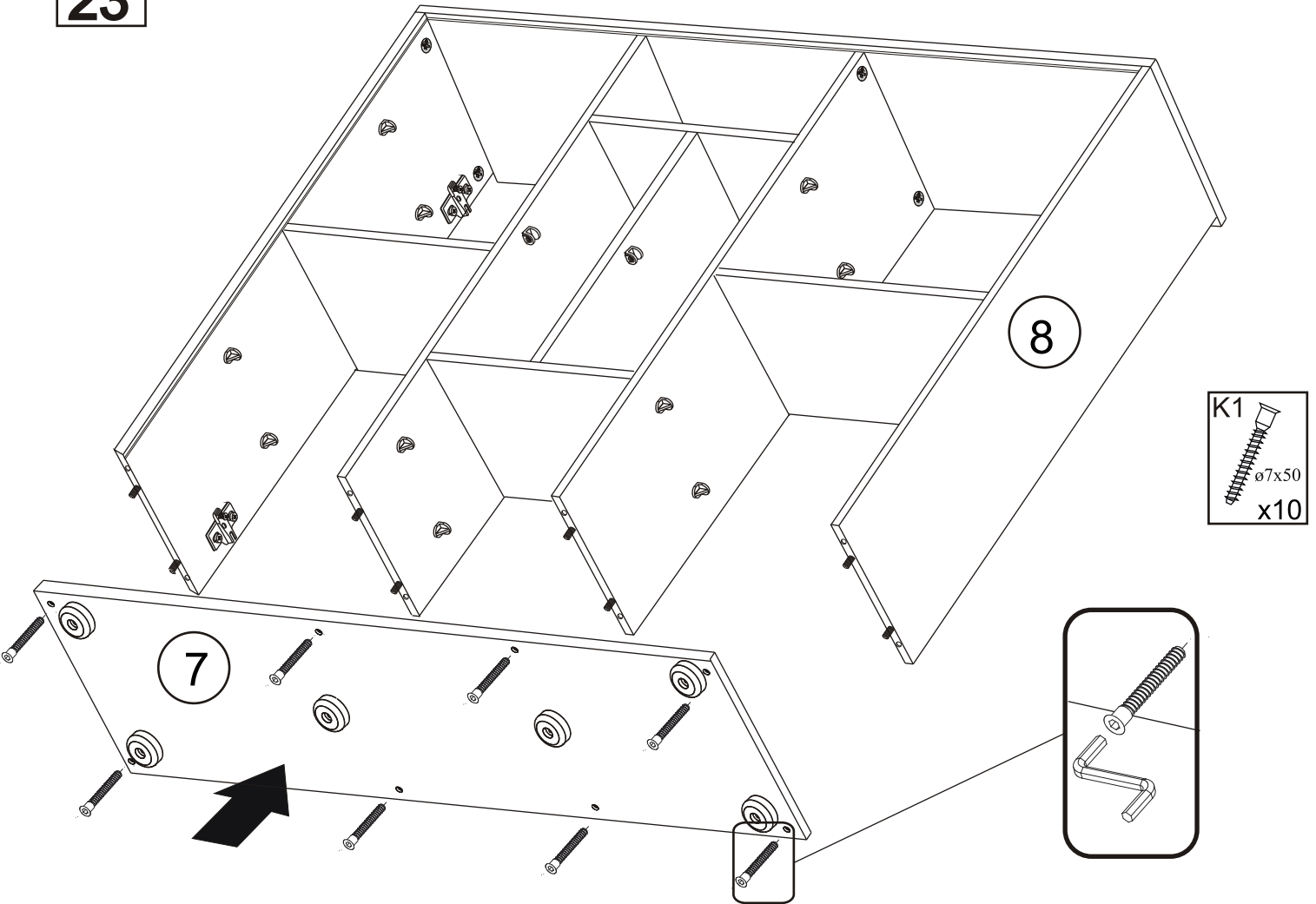
21



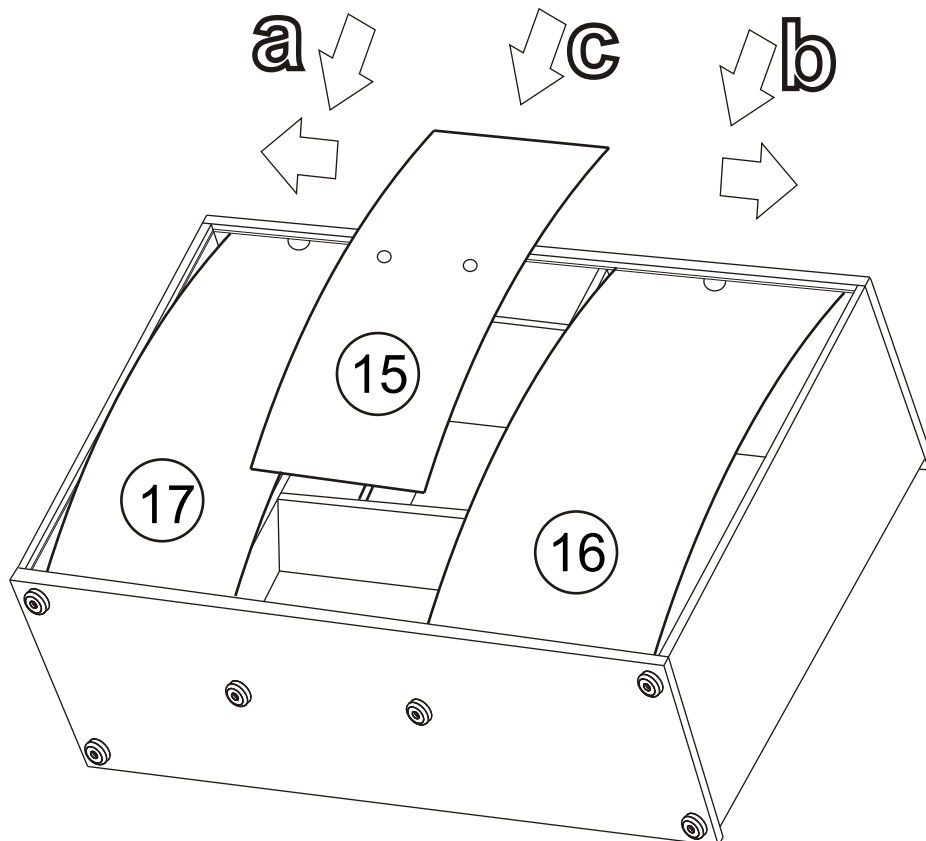
22



23



24



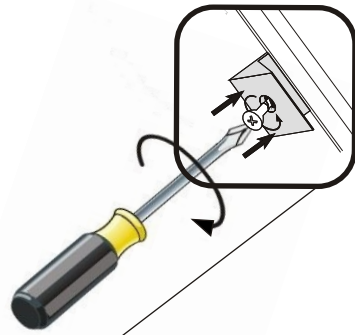
TRE HIGHBOARD

12/15

25



A=B



S1



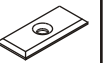
x12

W1

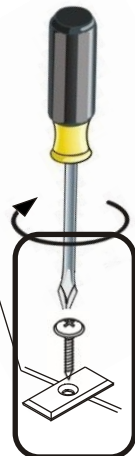
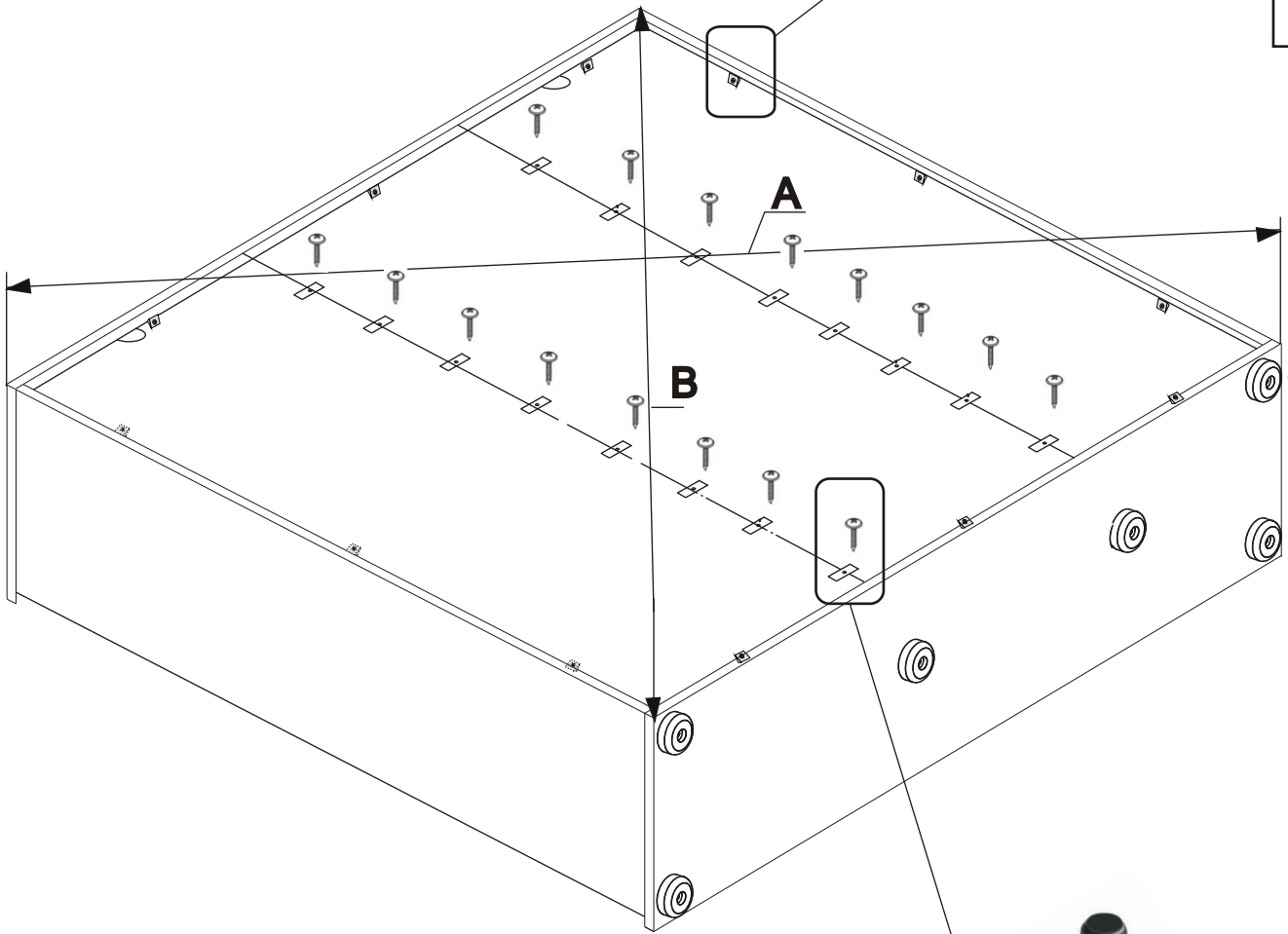


x16

PL1



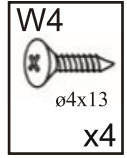
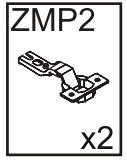
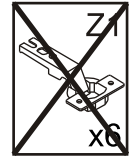
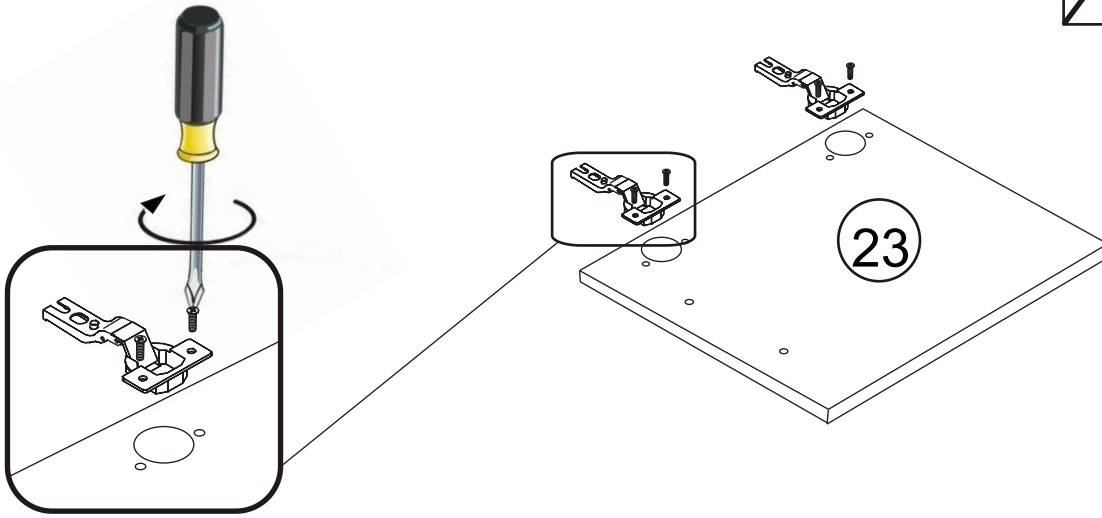
x16



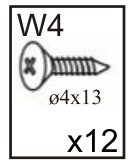
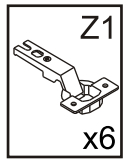
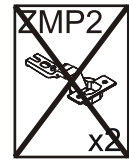
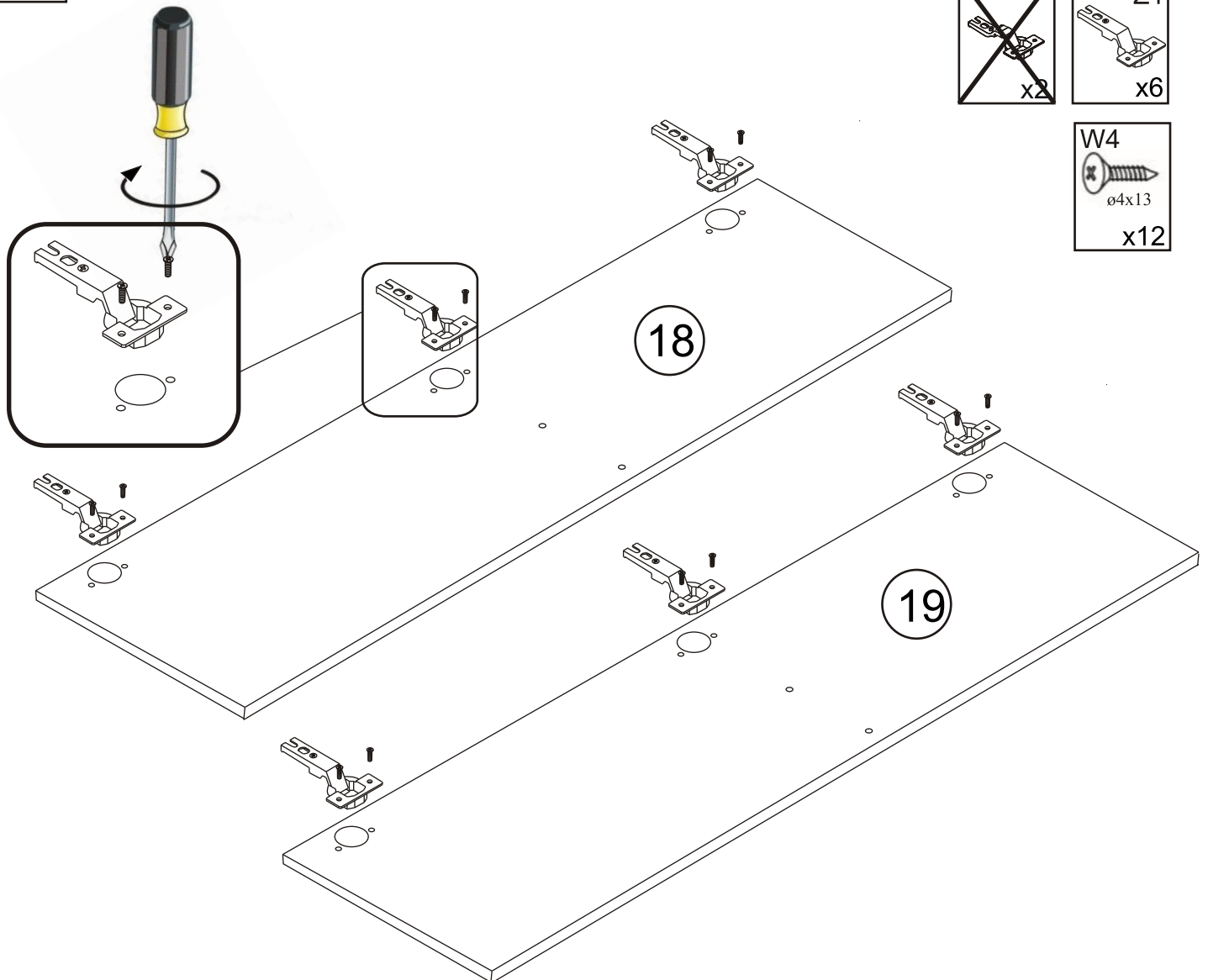
TRE HIGHBOARD

13/15

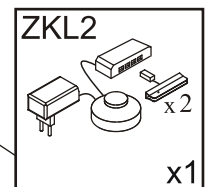
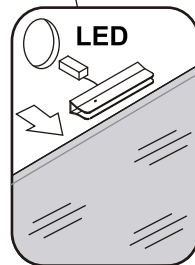
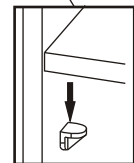
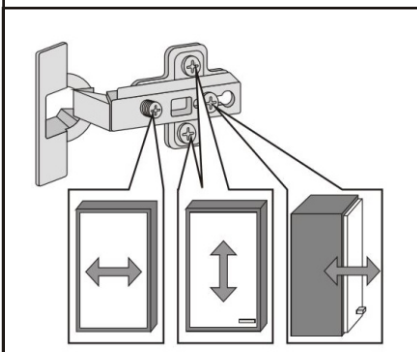
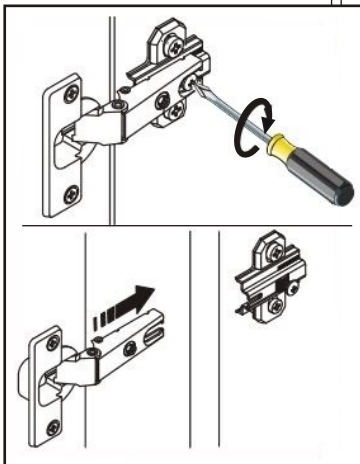
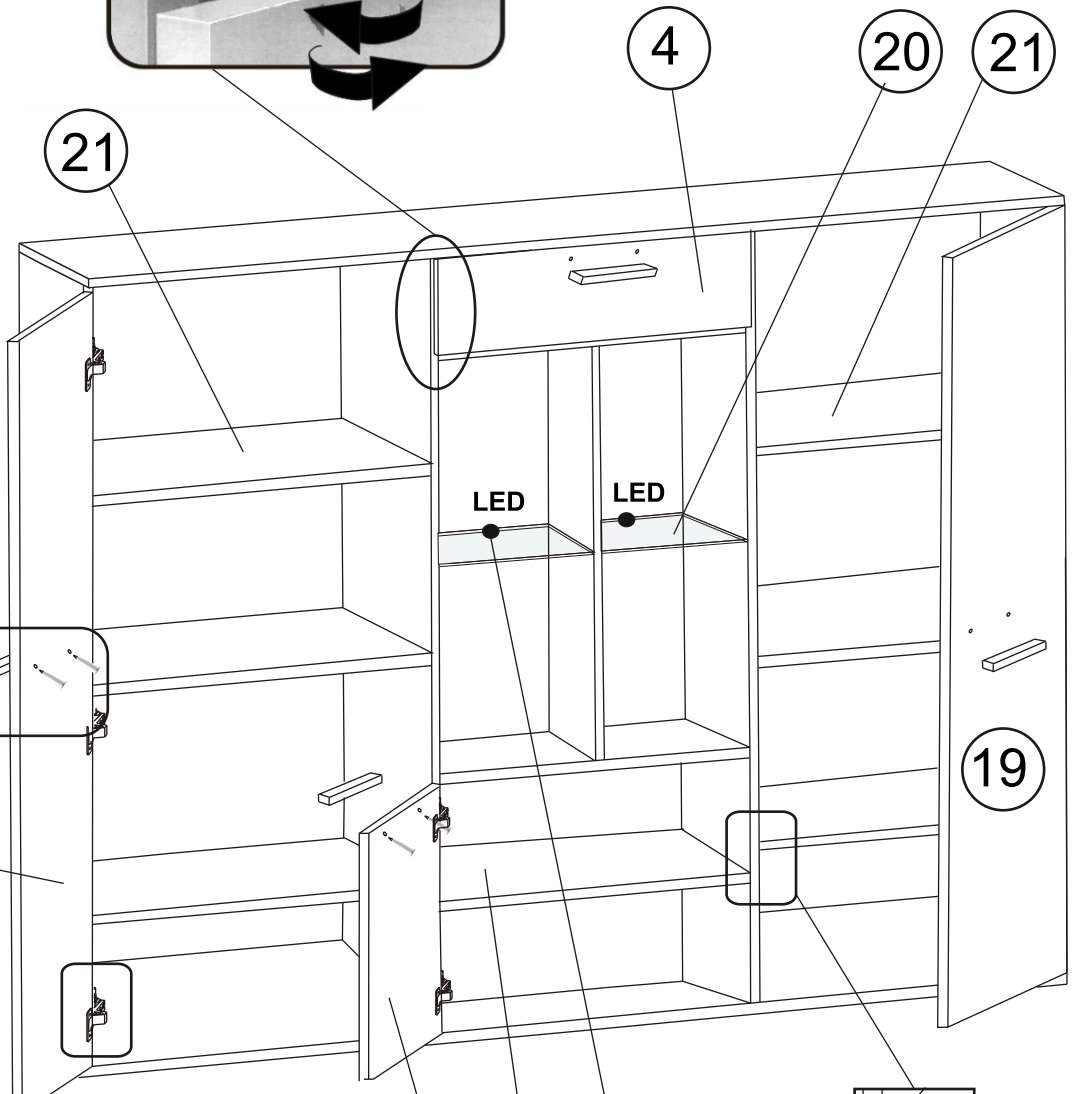
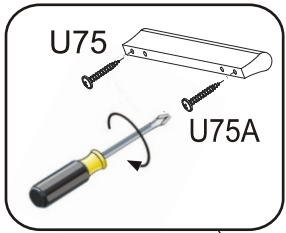
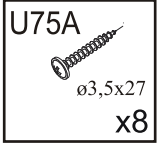
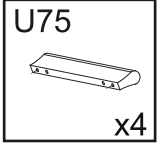
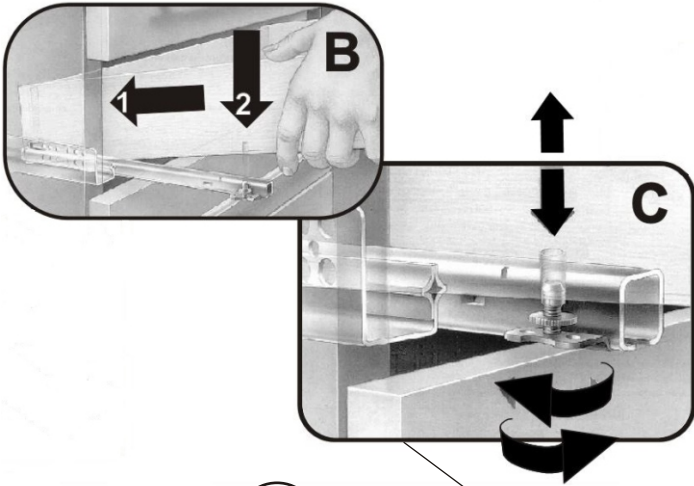
26



27



28



29

